

# DEVELOP YOUR MRO BUSINESS AT CLERMONT-FERRAND AUVERGNE AIRPORT EXTENDED LAND AVAILABLE



## AT THE HEART OF FRANCE

### AUVERGNE-RHÔNE-ALPES : 1<sup>ST</sup> INDUSTRIAL REGION IN FRANCE



#### AT THE HEART OF NATIONAL HIGHWAYS NETWORK

- 1h45 from Lyon
- 4h00 from Paris
- 3h30 from Montpellier
- 4h00 from Toulouse



#### SEVERAL DAILY RAIL CONNECTIONS

To major cities (Paris, Lyon, ...)

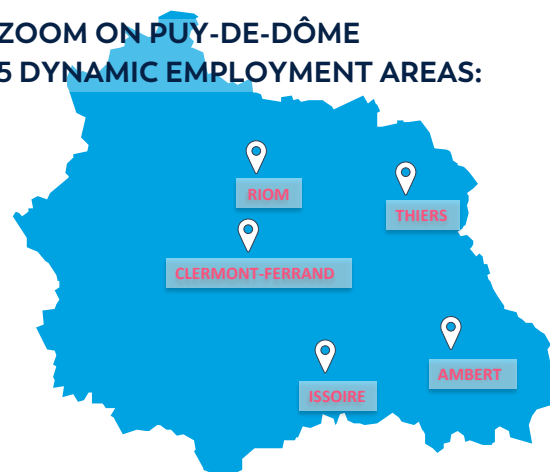


#### 1 INTERNATIONAL AIRPORT

Offering several daily flights with Paris and connections to Portugal and Morocco

Auvergne-Rhône-Alpes has the 1<sup>st</sup> regional GDP per capita. GDP per capita is 34 120 euros in the region, 4 000 euros more than the national average.

#### ZOOM ON PUY-DE-DÔME 5 DYNAMIC EMPLOYMENT AREAS:

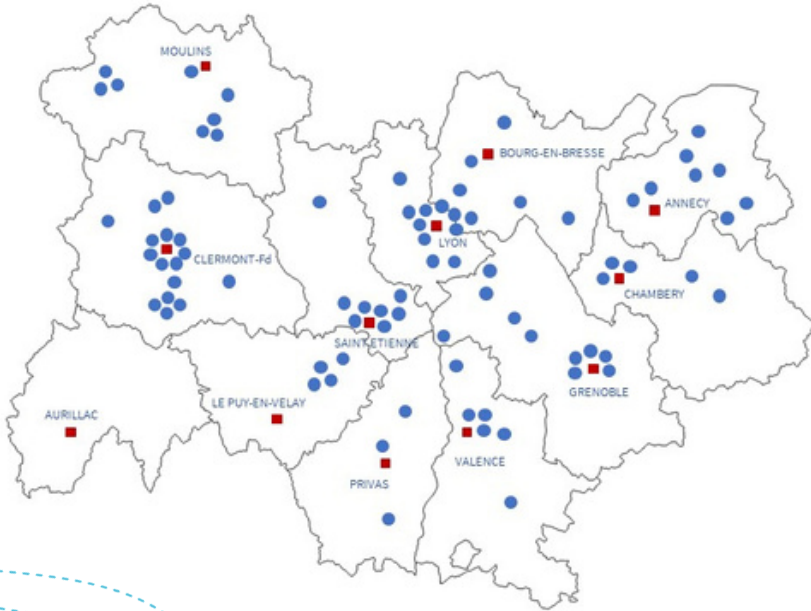


**47 907**  
ESTABLISHMENTS  
**240 043**  
EMPLOYMENTS  
**220**  
FOREIGN CAPITAL  
ESTABLISHMENTS

**Clermont-Ferrand : in the top 10 of the most attractive French cities**

# AERONAUTICAL INDUSTRY IN THE REGION

## CAPABILITY TO DESIGN AND MANUFACTURE ALL AIRCRAFT PARTS TYPE IN AUVERGNE-RHÔNE-ALPES



### AN AERONAUTICAL VALUE CHAIN ASSURED FROM END TO END

#### A region capable of :

Manufacturing structural parts and subassemblies

Delivering all materials needed for aerostructures

Supplying critical components and equipments

Providing innovative industrial manufacturing solutions

Designing aerospace systems

**660**

COMPANIES

**300**

CERTIFICATIONS 9100

**7 200**

EMPLOYMENTS

### MAIN AREAS OF ACTIVITY

#### MRO

Maintenance of military aircraft, helicopters, business aviation and commercial fleets, equipment repair center

#### MATERIALS AND INNOVATIVE PROCESSES

Metal alloys, composites, recycling technologies

#### ADVANCED EMBEDDED SYSTEMS

Flight control systems, electrical, inertial and optical systems, detection and protection equipment

### ECOSYSTEM

#### AEROSPACE CLUSTER

206 members

#### CENTERS OF EXCELLENCE

The centers of excellence of the region work in complementarity of the Cluster and contribute to the dynamics of the sector, with their own competencies (composite and metallic materials, mobility, chemistry, etc.)

#### SPECIALISED LABORATORIES AND RESEARCH CENTERS

They contribute to the R&D dynamics of the sector, such as ONERA

# QUALITY OF LIFE

## IN PUY-DE-DÔME

**82** INHABITANTS PER KM<sup>2</sup>

CLERMONT-FERRAND  
INTERNATIONAL **SHORT**  
FILM FESTIVAL



HISTORICAL THERMAL  
STATIONS



WITH NUMEROUS BENEFITS

**5** PDO CHEESES



SAINT-NECTAIRE, FOURME  
D'AMBERT, CANTAL, SALERS,  
BLEU D'Auvergne

KNIFE MAKING  
IN THIERS



SPORT CLUBS : RUGBY ASM  
CLERMONT AUVERGNE  
AND CLERMONT-FOOT

**2** REGIONAL  
NATURE PARKS



THE CHAIN OF PUYs AND ITS

**80** VOLCANOES



CLASSIFIED AS UNESCO  
WORLD HERITAGE SITE

**VULCANIA**

THEME PARK AT THE HEART OF  
THE VOLCANOES

## A RICH AND DYNAMIC ECOSYSTEM

A large network of excellence centers which facilitates exchanges between researchers from public or private organisations and contractors, on collaborative R&D projects



Major regional hub with a network of main aerospace and defense industry players, with 206 members : companies, research laboratories, training centers, airports and institutions including more than 120 SMEs.

## OTHER IMPORTANT CLUSTERS



Systems engineering & mechanics (500 members)

Flexible and textile materials (160 members)

Environment and chemistry sectors (320 members)

Rubber, plastics and composites (270 members)

Global safety (600 members)

## TRAINING CENTERS

- More than 35 000 students
- University certified with the label of excellence I-SITE
- 5 Campus of excellence
- Internationally renowned schools with welcoming support for international students

## DIVERSIFIED AND DYNAMIC R&D

3<sup>rd</sup> department in the region in terms of industrial patents (INPI 2019).

Reknowned public and private research centers:





# CLERMONT FERRAND AUVERGNE AIRPORT

Open 24/7 - No slot restrictions

COMMERCIAL AND BUSINESS AVIATION, AIR FREIGHT

2022 statistics (excluding general aviation)

**188 000** PASSENGERS

**110** CARGO  
MOVEMENTS

**4 800** MOVEMENTS

**3 000** TONS  
CARRIED

**1 600** BUSINESS AVIATION MOVEMENTS

Commercial terminal  
8 check-in desks  
4 boarding lounges



Business Aviation terminal



All aircraft types handled  
from private jets to jumbo  
jets



Commercial aircraft  
maintenance center



Training center Part 147



Military aircraft  
maintenance center





# AN ECOSYSTEM OF EXCELLENCE WITH PROVEN EXPERTISE IN MRO & MCO



## A training institute for aerospace degrees and qualifications Lycée Roger Claustres (63)

Certification Part 147

Each year more than 300

learners in training

Examples of educational learning  
offered :

- Aeronautical maintenance (diploma of higher education)
- Aeronautical boilermaking
- Painting/Coating
- Cabin interiors



**CAMPUS  
DES MÉTIERS  
ET DES  
QUALIFICATIONS**  
Aéronautique  
Auvergne-Rhône-Alpes



## Ateliers Industriels de l'Aéronautique (SIAé - French Air Force)

1 400 employees, ensuring the  
maintenance of more than 600  
aircraft

Activity provider (25 M€ for  
regional companies, including 7 for  
local SMEs)

8 fleets maintained in Clermont-  
Ferrand : Rafale - Mirage 2000 -  
AlphaJet - A400M (Atlas) - C130  
(Hercules) - Tigre - Puma - Gazelle

## SERVICE PROVIDERS TO RESPOND TO ALL TYPES OF REQUESTS

- Metal and composite structural repairs
- Avionics/instruments and systems repairs
- Non destructive testing
- Aircraft painting/coatings
- Cabin interiors





# MRO/ MCO ECOSYSTEM ON THE AIRPORT



## AVAILABLE SPACES

1

EXTENDED LAND -  
LANDSIDE (NORTH)  
Total area : 6000m<sup>2</sup>  
(150mx40m)

2

EXTENDED LAND -  
AIRSIDE (NORTH)  
Total area : 5 ha  
(530mx130m)

3

EXTENDED LAND -  
AIRSIDE (SOUTH)  
Total area : 8000m<sup>2</sup>

4

HANGAR W12  
AIRSIDE (NORTH)

5

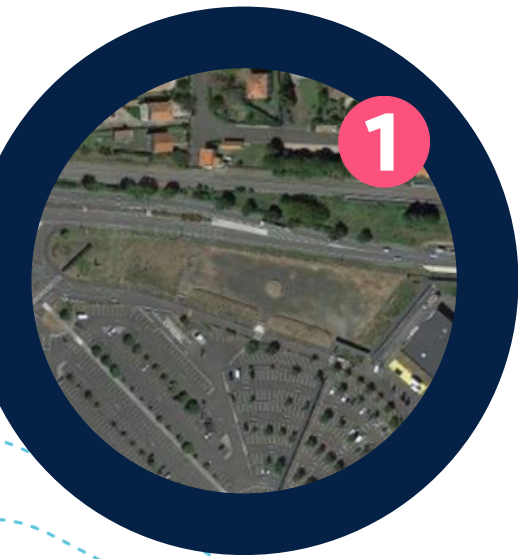
NEFS  
LANDSIDE (NORTH)





# AVAILABLE SPACES

## COMMERCIAL TERMINAL AND LANDSIDE

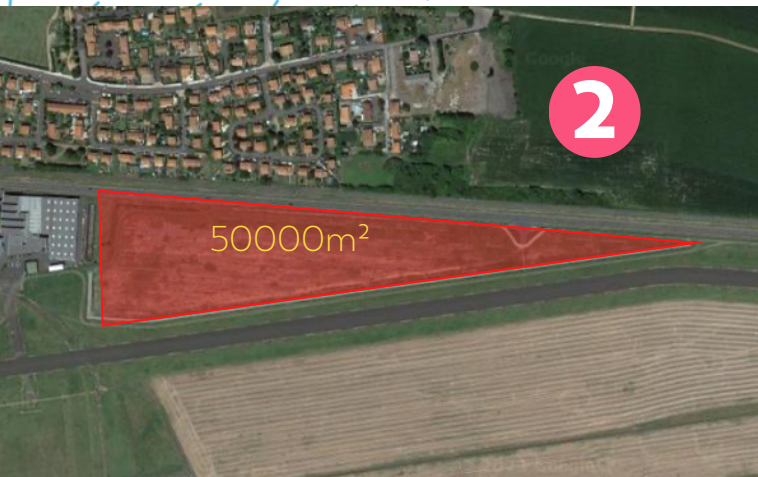


### EXTENDED LAND - LANDSIDE (NORTH)

The land is located along the RN769 in front of the commercial terminal. Direct access to railway station and metropolitan bus stop.

At the edge of the property (gas - electricity - sanitation - potable water - telecoms)

**Total area : 6000m<sup>2</sup> (150mx40m)**



### EXTENDED LAND - AIRSIDE (NORTH)

The land is located along the RM769 to the Northeast of the airport. Road access to be created (possibility of runway access). At the edge of the property (gas - electricity - sanitation - potable water - telecoms). Maximum construction height of 12m. Archeological excavation already done.

**Total area : 5 ha (530mx130m)**

### EXTENDED LAND - AIRSIDE (SOUTH)

The land is located in delimited security zone to the South of the airport with direct access via the D766. Run-up zone (engine tests). Potable water - gas - electricity - telecoms - rainwater. Illuminated aircraft parking ramp.

**Total area : 8000m<sup>2</sup>**





# AVAILABLE SPACES LANDSIDE NORTH

4

## HANGAR W12 - AIRSIDE

The building is located in critical part of the airport security area controlled with security screening for road access, direct access aircraft parking ramp and runway, private car park and direct proximity with the Business Aviation terminal.

(Gas - electricity - sanitation - potable water - telecoms)

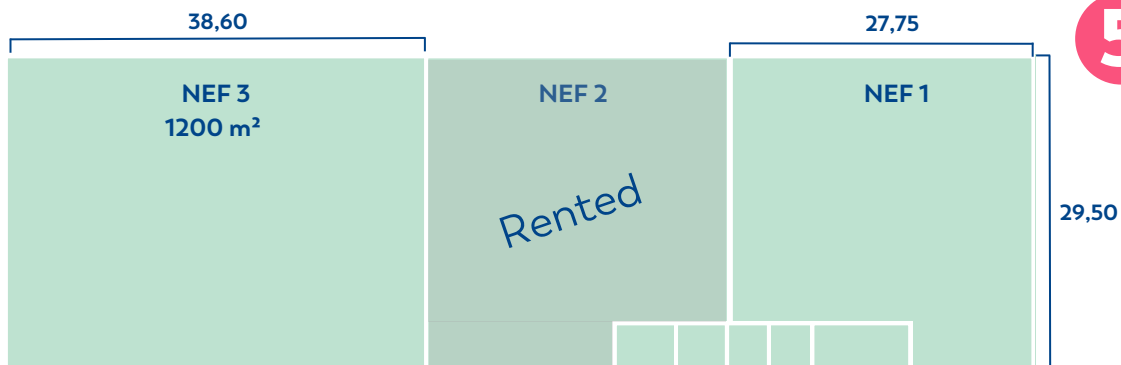
Total area : 1650 m<sup>2</sup> (H-8,44m)

Dimensions aircraft access : ex : Embraer 145 or ATR 72

- Hangar 1400 m<sup>2</sup>
- Offices 250 m<sup>2</sup>



5



## NEF 1 - LANDSIDE

Total area : 810m<sup>2</sup> (H- 6m)

Dimensions aircraft access : ex: Falcon 2000 = L27m, W24m, H6m

## NEF 3 - LANDSIDE

Total area : 1200m<sup>2</sup> (H- 6m)

Dimensions aircraft access : ex: SAAB 2000 = L38m, W27m, H8m

## NEFS - LANDSIDE

The building and its car park are located in delimited security zone. Access to the nef's landside / airside access after security screening. Direct proximity with the Business Aviation Terminal. Each nef can be independant. (Gas - electricity - sanitation - potable water - telecoms)

